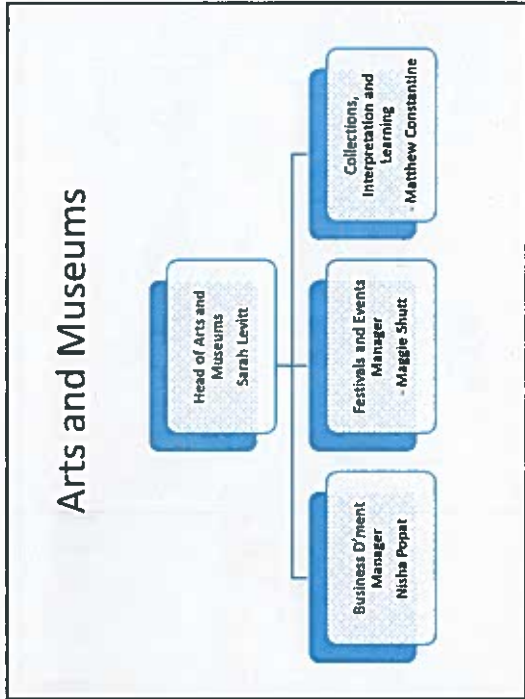


**Heritage, Culture, Leisure and Sport**

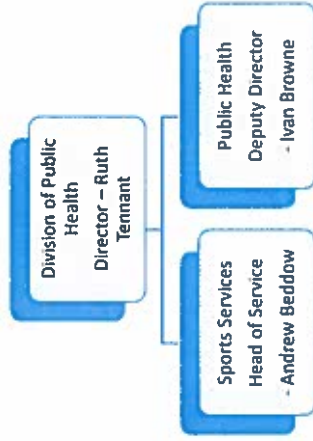
Heritage & Culture	Mike Daizell	Director of Culture, Tourism and Investment
Leisure	John Leach	Director of Neighbourhood and Environmental Services
Sport	Ruth Tennant	Director of Public Health



- Broad Priorities**
- Develop our Cultural Ambition : build on our international connections; magnify our originality; bring people together. Via
    - Delivering a high quality museums service
    - Exploring, promoting and investing in Leicester’s heritage
    - A vibrant festivals and events programme
    - Support for key cultural organisations

- Priorities for 2016/17**
- Develop plans to invest in key visitor attractions (Jewry Wall and Abbey Pumping Station)
  - Develop plans for increasing income (e.g. De Montfort Hall) and reducing costs (across service portfolio)
  - Supporting investment in new and existing cultural and creative organisations and businesses (e.g. Haymarket)

## Public Health – Sport



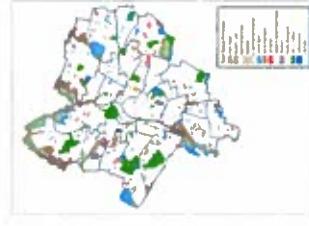
## Sport & Active Lifestyle Services

- 14 facilities – includes 7 swimming pools, 1 golf course, 1 athletics track
- Sport on Parks oversee outdoor sports facilities, playing pitches, tennis, putt and putt etc. across the City
- Sports Development supports 55 sports and over 300 clubs, coordinates sport and physical activity grants
- Active Lifestyle Service delivers city wide physical activity and exercise referral programme. Over 3000 referrals annually
- The Service attracts over 2.4m users every year

## Parks and Open Spaces



## Parks



- 22% of total city area
- 12 main parks
- 143 Parks/Green Spaces
- 171 Play areas, 23 ball courts
- 4 skate parks, 5 BMX, 1 Parkour
- 12 Outdoor gyms (+ 19 to be installed)

## Parks

- Football/cricket/bowls/tennis
- 70 hectares of woodland
- 149,000 trees
- Housing green space
- Highways green space
- Nature areas
- Waterbody management
- Landscape development
- 17 Green Flag awards



## Bereavement Services

- 1 Crematorium
- 4 Cemeteries
- 2,503 cremations
- 957 burials
- 10,000 memorials inspected
- Water based scattering ashes
- Saffron extension
- Memorial service



## Priorities for 2016/17

- Implement a new Parks structure
- Ensure effective marketing of Bereavement Service
- Design a cemetery extension @ Saffron Hill
- Introduce external defibrillators in City parks
- Introduce a tree strategy
- Increase participation in volunteering
- Enhance opportunities for wildlife/biodiversity
- Completion of Centenary Walk
- Installation of an additional 19 outdoor gyms

